

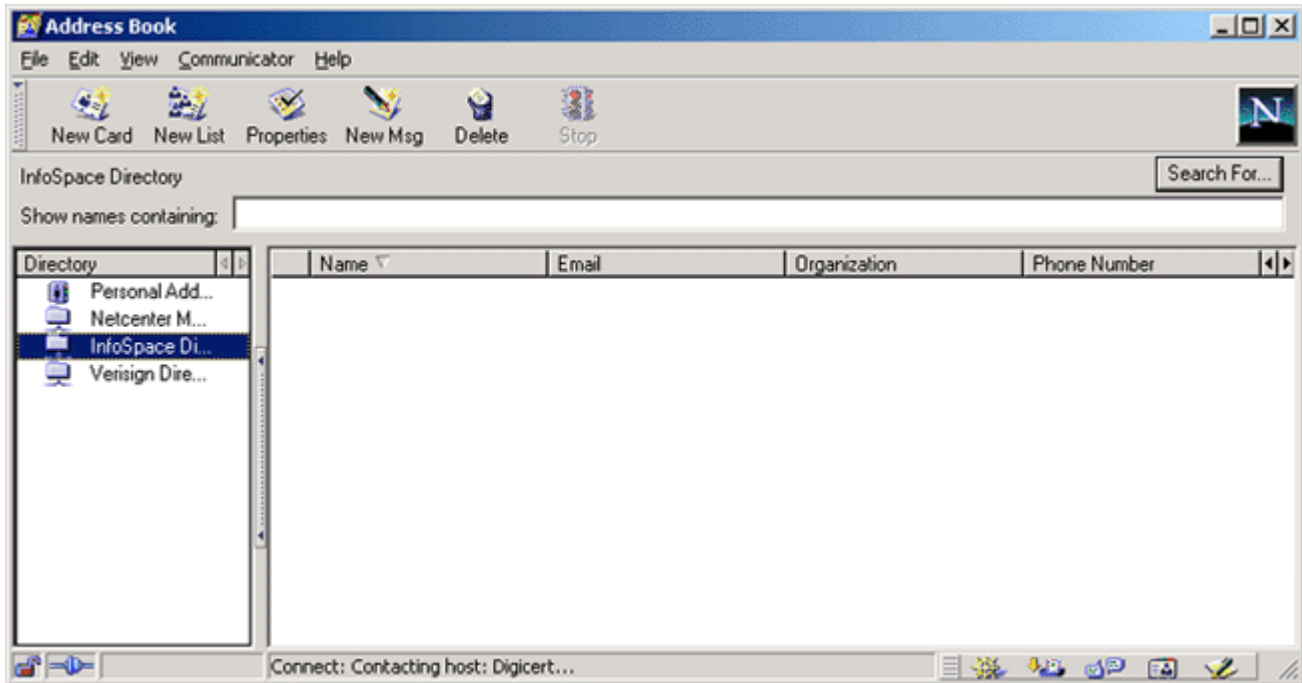


searching certificate holder for netscape's users

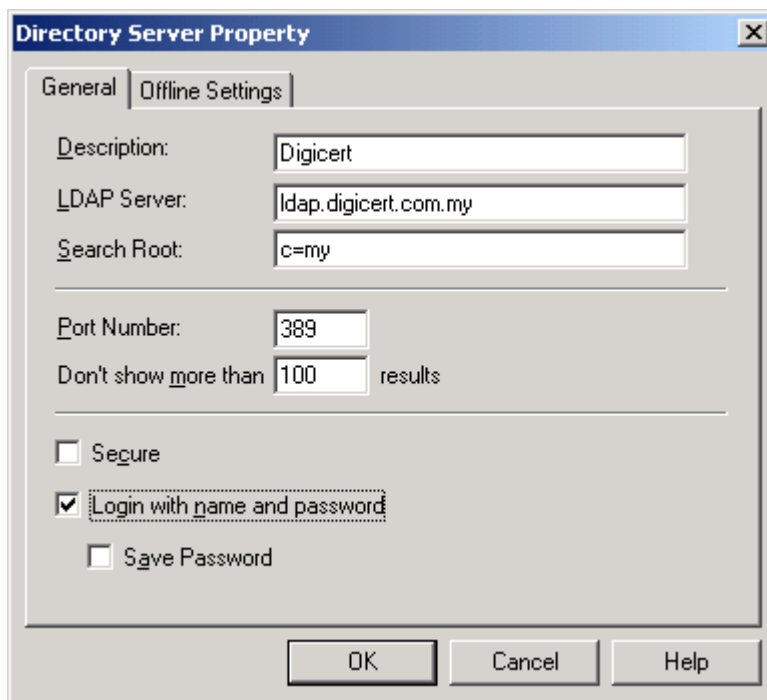
GUIDE FOR SEARCHING CERTIFICATE HOLDERS FOR NETSCAPE'S USERS

To add new ldap server:

- 1- Select Communicator form menu and Address Book option.
- 2- Select File and New Directory Option.



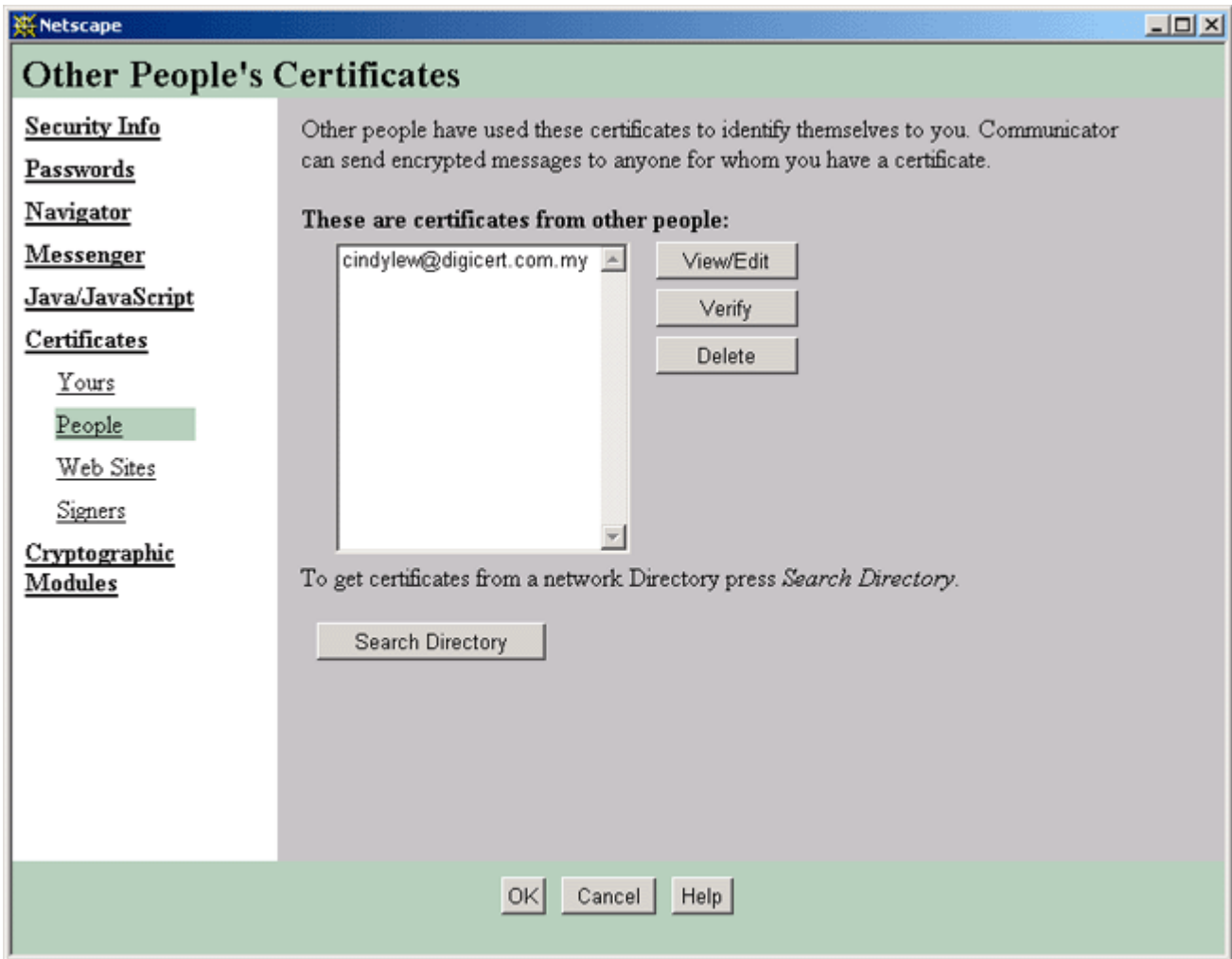
- 3- Fill in the blank fields (example: Description= Digicert, LDAP Server = ldap.digicert.com.my, Search Root = c=my).
- 4- For Port make sure it is set to 389.Click OK
- 5- Open Netscape Messenger and you can found the server already added to your Netscape Messenger directory list.



6- From your Netscape browser, select the Security button.

7- Choose Certificates --> People.

8- Click on Search Directory button.



9- Type the e-mail address of the person you are looking for. Select the directory you just set up and click on Search.



10- Click OK.



11- You will find the e-mail address already added into your People list.

12- Select the name and click on Edit/View to view the person's certificate detail.

